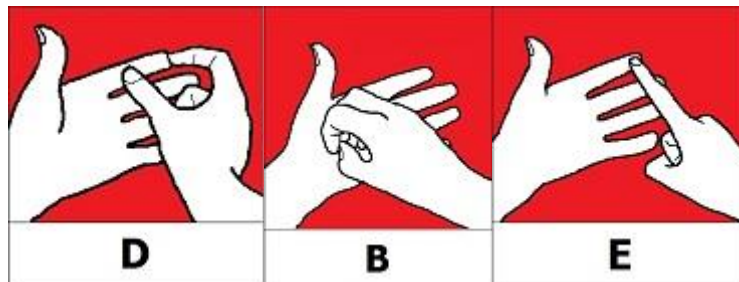




Deafblind Enablement's Specialist Training Brochure 2013



**DBE is the leading specialist deafblind and
sensory training agency**



Mission

Deafblind Enablement (DBE) is an organisation dedicated to enabling people who live with a sight and hearing loss to learn new skills, develop existing skills, gain access to their community and existing services with dignity, respect, control and choice.

Objective:

DBE is the leading specialist training agency for deafblind people.

Values

- To treat deafblind people with dignity and respect at all times
- To provide flexible trained workers when a deafblind person is in need
- To be honest, trustworthy and reliable
- To provide a confidential service to meet individual needs
- To be competitively priced, working with deafblind people to shape the services required
- To provide clarity and focus on objectives
- To facilitate effective communication between all stakeholders

The Team

Debbie James, Director, who has 30 years experience working in the field of dual sensory loss, assessing, advising and teaching deafblind people with an enablement focus.

Debbie's skills and experience include teaching on the Diploma in Deafblind Studies as a recognised University Lecturer. Debbie's qualifications include: MBA modules – Strategy and Business Operations - Added Value; Diploma's in Professional Management and Rehabilitation in Visual Impairment; BSL Level 2; Deafblind Manual Interpreter and has been a CQC Registered Manager for Domiciliary Care for over 7 years.

Lynn Sargeant, Services Manager, who has worked in an admin support role within this field for 7 years; she has a good understanding of, and empathy with, the needs of deafblind people.

Dr P Gafga, Consultant on Deafblindness. Philip has many years experience as a Deafblind person himself with holistic expertise within this field. Philip has worked closely with Debbie over many years and is instrumental with PR and Awareness nationally. He is truly inspirational.



We also have an elite team of personally selected, fully trained freelance professionals including communicator-guides and deafblind interpreters with many years experience working with and for deafblind people. Everyone who works for Deafblind Enablement has a minimum of Signature CACDP Level 2 (or equivalent) plus relevant professional qualifications including up-to-date CRB.

The tutors of these courses are trained as Rehabilitation Officer's for Visual Impairment; the Director herself has over 25 years qualified experience of teaching and training delegates.



Summary of 2013 Training Dates Book Now:

Deafblind Awareness Course: Page 6

Euston, London: 12 November 2013

Communicator-Guide Support Worker Course: Page 9

Durham: 9, 10, 29, 30, 31 October 2013

Fetcham, Surrey: 16, 17, 23, 24, 25 October 2013

Sandwell, Birmingham: 5, 6, 15, 18, 19 November 2013

Specialist Assessment Course: Page 8

Euston, London: 12 & 13 November 2013

For further details regarding any of the above see our website:

www.deafblind-enablement.co.uk

or contact us by phone: 01733 746538

or via email: info@deafblind-enablement.co.uk

Deafblind Awareness Course

This 1 day certificated course consists of the following learning outcomes:

- Define and learn about the different groups of deafblind people
- Discuss the causes, implications and identify individual needs
- Deafblind peoples' perspective on life
- Understand communication issues and learn different methods to assist them
- Discuss how to improve accessibility for deafblind people
- Learn how to safely guide a deafblind person and good practice techniques
- Understand legislation and the services available

Book a Deafblind Awareness Course at a cost of £750 all inclusive for up to 16 of your staff at your venue on a date to suit you.

Alternatively, individual places are available on the following course:

12 November – Euston, London

Deafblindness;

Persons are regarded as Deafblind if “their combined sight and hearing impairment causes difficulties with communication, access to information and mobility. This includes people with a progressive sight and hearing loss”

www.dh.gov.uk, 2009.

Deafblindness can be found in all age groups, including children, but the incidence is greatest in older adults.

Deafblind Awareness Basic Introductory Session

This 3 hour course consists of the following learning outcomes:

- Define deafblindness and learn the different groups of deafblind people
- Discuss the causes, implications and identify individual needs
- Understand communication issues
- Understand movement, orientation and mobility issues
- Discuss how to improve accessibility for deafblind people
- Understand where to go for further support or help

We are able to offer this training at a cost of £350** for up to 16 of your staff at your venue on a date to suit you.

NOTE: This session can be commissioned with any of our one-day courses, facilitated the day before at a venue of your choice, at a discounted rate of £250.

Volunteer Deafblind Awareness

This 1 day course consists of the following learning outcomes:

- Define deafblindness and learn the different groups of deafblind people
- Discuss the causes, implications and identify individual needs
- Learn communication methods
- Learn safe guiding techniques
- Learn accessibility and general good practice.
- To focus on volunteer's enabling and enhancing independence
- Detailing boundaries and assertiveness
- Learn about safe-guarding issues

Deafblind Enablement's Director has run Volunteer Schemes for deafblind people, with over 10 years' experience on a local and national scale. This course is specifically tailor-made to meet each audience's needs.

We are able to offer this training at a cost of £400** for up to 16 of your staff at your venue on a date to suit you.

Specialist Assessment Course

This course consists of the following learning outcomes:

- A full day Deafblind Awareness overview– including the different types and the effects of deafblindness on everyday living.
- Implications of communication, access to information and movement, orientation and mobility issues.
- Teaching communication methods, safe guiding and good practice.
- A full day understanding Social Care Guidance for Deafblind Adults and Children, how to provide a Specialist Assessment to meet the needs of an individual, including safeguarding, Mental Capacity Act and additional disabilities, etc.
- Service provision available and how to provide it with an enablement focus.
- Deafblind peoples' perspective on their daily life

With expertise, knowledge and experience of working as a Specialist Assessor for deafblind people over 28 years, the Director has been writing and facilitating this training over the last 14 years. Course evaluation feedback received from professionals who work as Assessors, Care Managers, Social Workers, Teachers or Information/Advice workers has been “excellent” and “good”.

This course is specifically tailor-made to working with children and adults to meet the audiences' needs and to meet “Social Care for Deafblind Adults and Children” Section 7 Guidance, 2009. For further information please see these links:

http://www.dh.gov.uk/prod_consum_dh/groups/dh_digitalassets/documents/digitalasset/dh_101113.pdf

<http://www.deafblind-enablement.co.uk/Feedback.php>

We are able to offer this training at a cost of £1,350** for up to 14 of your staff at your venue on a date to suit you.

Alternatively, individual places are available on this course at the following venues / dates for £150 per person:

12 & 13 November – Euston, London

Deafblind Communicator-Guide Support Worker Course (QCF DBG2)

This 5-day nationally recognised course is a specifically designed certificated course tailored to meet the needs of support workers and professionals working with deafblind people. It consists of the following learning outcomes:

- Definition and groups of deafblind people
- Effects including emotional, physical and mental well-being
- Communication methods: including Deafblind manual, 'Block' alphabet, lip-reading, clear speech, facial expressions, gestures, BSL finger-spelling and good practice techniques
- Access to information
- Safe guiding (internal and external activities), environmental information and impact on movement, orientation and mobility
- Simulation exercises
- Specific equipment available
- Legislation and Services

Deafblind Enablement is a registered exam centre with Signature / CACDP. Delegates will undertake the certificated examinations (K202, T201, T202). We are able to offer this training from £2,000** (plus exam fees and facilitators costs) for up to 14 delegates at your venue at a date to suit you.

Individual places are available on this course with exams at the following venues/dates for £610 per person including exam fees:

Durham: 9, 10, 29, 30, 31 October 2013
Fetcham, Surrey: 16, 17, 23, 24, 25 October 2013
Sandwell, Birmingham: 5, 6, 15, 18, 19 November 2013



Deafblind Manual – letter 'L'



Environmental Information & Guiding

DBE values feedback and comments – please see:

<http://www.deafblind-enablement.co.uk/Feedback.php>

DBE's Facebook page also has some valuable feedback from Communicator-Guide Support Worker Course:



click onto our website and the Facebook site is situated on the right-hand side.

This course would be beneficial to people who provide the following roles:

- PA service to a person with a dual sensory loss
- Communicator-guides/support workers
- Social Workers/Care Managers
- Specialist Assessors
- Communication Support Workers
- Interpreters for Deafblind People
- Anyone who comes into direct contact with a person with a dual sensory impairment.



Deafblind Communicator-Guide Support Worker Course (QCF DBG2) combined with Specialist Assessment Training (see page 8)

This 6-day course integrates both courses together to ensure professionals are equipped to understand this unique disability, with confidence in facilitating specialist assessments and support techniques, completing DBG2 examinations.

We are able to offer this training at a cost of £2,750** for up to 14 of your staff at your venue on a date to suit you (plus exam fees and facilitators costs).

Communicator-Guide Refresher Course

This 2-day course is aimed at delegates who are currently Communicator-Guides who have been supporting deafblind service users or people who have undertaken the previous Level 3 Communicating and Guiding CACDP exam and would like to refresh their skills/knowledge. This is in line with the QCF CACDP DBG course. It consists of the following learning outcomes:

- Effective communication methods
- Access to information
- Medical Appointments: the role of the communicator-guide
- Confidentiality, legislation and services
- Safe guiding techniques.
- Motivation and encouraging/persuasion techniques
- SOVA / POVA
- How to alleviate stress/vulnerability
- Simulation exercises

We are able to offer this training at a cost of £200 per delegate or facilitate in-house training for up to 14 delegates for £1000**.

To ensure quality standards and staff are fully compliant, the DBG2 Signature assessments can be undertaken on day 3 of this course at an additional cost.

**Sensory Loss Tutor Training
Diploma in Health and Social Care -
Qualification and Credit Framework (QCF)**



City and Guilds and Pearson Edexcel have both posted two new courses:

Level 2 Introduction to Sensory Loss (SS MU 2.1 or Unit 34)

http://www.cityandguilds.com/documents/ind_healthsocial_care/4222-21_QHB_HSC-L2-England_v05.pdf

[http://pearsonwbl.edexcel.com/migrationdocuments/QCF%20competence based%20qualifications/N029651-L2-NVQ-in-Health-and-Social-Care-Adults-EW-NI-Issue-4-281011.pdf](http://pearsonwbl.edexcel.com/migrationdocuments/QCF%20competence%20based%20qualifications/N029651-L2-NVQ-in-Health-and-Social-Care-Adults-EW-NI-Issue-4-281011.pdf)

Level 3 Understand Sensory Loss (SS MU 3.1 or Unit 31)

http://www.cityandguilds.com/documents/ind_healthsocial_care/4222-31_QHB_HSC-L3-England-Adults_v1.1.pdf

[http://pearsonwbl.edexcel.com/migrationdocuments/QCF%20competence based%20qualifications/N029652-Level-3-Health-and-Social-Care-Issue-3-031111.pdf](http://pearsonwbl.edexcel.com/migrationdocuments/QCF%20competence%20based%20qualifications/N029652-Level-3-Health-and-Social-Care-Issue-3-031111.pdf)

Please contact DBE to provide the underpinning knowledge and understanding including workbooks required to facilitate these courses.

Sensory Loss Training

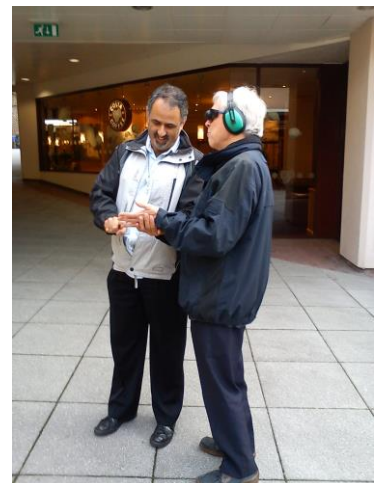
This 1 day course consists of the following learning outcomes:

- Define visual impairment, discuss terminology and myths/misconceptions
- Define hearing loss/Deafness, discuss terminology and misconceptions
- Discuss common causes, implications and identify individual needs
- Understand communication issues and learn different methods to assist them
- Discuss how to improve accessibility
- Simulation exercises
- Learn how to safely guide a visually impaired person, good practice techniques
- Introduction to aids/equipment and how they enhance a person's life
- Understand legislation and the services available

The cost of providing this training at your venue is £800** for up to 14 delegates.

The following courses can be commissioned for £350** at your venue, tailored to meet your individual needs for a 3-hour session:

- Introduction to Visual Impairment
- Introduction to Deafness and Hearing Loss
- Introduction to Sensory Loss
- Introduction to Deafblindness



Additional Information

Each attendee receives a training workbook and certificate for every course.

Deafblind Enablement Ltd operates a 'Simulation' Policy; please ask if you require a copy.

**** All expenses will be charged at cost, i.e. accommodation, train fares and subsistence; any mileage incurred will be at a rate in line with Inland Revenue recommendations (currently 45p per mile).**

All costs are subject to VAT.

Interpreters are not booked automatically for each course; please contact us for a discussion if you require interpreters.

We would like to take this opportunity to thank the many organisations who have agreed to work in partnership with us to ensure courses to take place. These include Guide Dogs for the Blind, Signature, Huntingdon College, Surrey Association for the Blind (SAVI) and Sandwell MBC.

If you are interested in working in partnership please do not hesitate to contact us. If you provide the venue and light refreshments, we jointly publicise the course. In return, providing we have 6 paying delegates you receive a free place and if we have 12 paying delegates then you get more free places. In this way your staff receive the training but with minimum outlay from yourselves.

Best wishes

Debbie, Philip, Lynn and the rest of the team

Tel: 01733 746538

Email: lynn@deafblind-enablement.co.uk

Website: www.deafblind-enablement.co.uk

You can also follow us on Facebook

